
MING-HSIU YEN 顏名秀

ONE, TWO, THREE

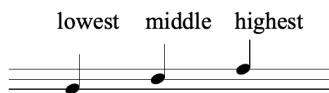
for piano
(2018)

ONE, TWO, THREE

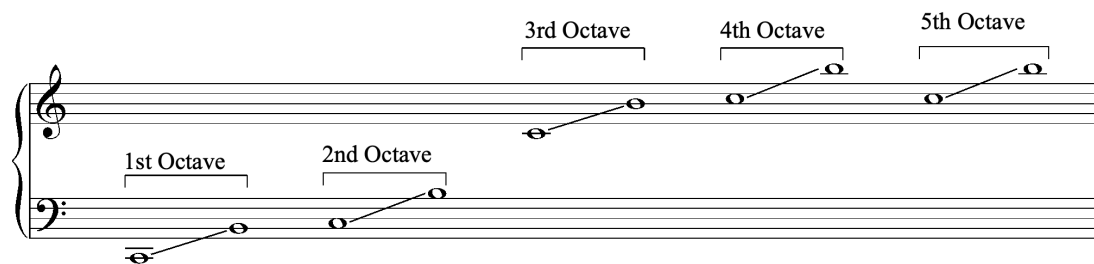
for piano (2018)

NOTES FOR THE PERFORMER:

1. Randomly choose 3 notes out of 12.
(The performer may make his or her own choice in any manner some time before playing or right before playing. In concert setting, the performer is also encouraged to ask the audience to choose these 3 notes.)
2. Put these 3 designated notes in order within an octave (C being the lowest, and B being the highest).
3. For each 3-line staff, these 3 designated notes (the lowest, the middle, and the highest) are corresponding to the following map:



4. Each 3-line staff corresponds to a specific octave on the keyboard:



DURATION: approx. 3 minutes and 20 seconds (or shorter)

Commissioned by Annie Jeng
ONE, TWO, THREE
for piano

Vivace ♩ = ca. 144 (or as fast as possible)

Ming-Hsiu YEN
(2018)

4/4 *ff* (speaking) **3/4**

VOICE

One! Two! One! Two! Three!

5th Octave

4th Octave

PIANO 3rd Octave

ff

2nd Octave

1st Octave

pp *sempre*

6

Voice

5th Oct.

4th Oct.

3rd Oct.

2nd Oct.

1st Oct.

f

f

Voice

19

The musical score for 'The Great Wall of China' by John Adams is presented in a piano arrangement. The score is written for a voice part and five octaves of piano. The time signature is 3/4. The key signature is one flat (B-flat). The score is divided into six measures. The first measure features a voice part with a whole note chord (B-flat, D, F) and a piano part with a series of eighth notes in the first octave, marked *pp sempre*. The second measure continues the piano part with eighth notes in the first octave. The third measure introduces a new piano part in the second octave, marked *f*, with a series of eighth notes. The fourth measure continues the piano part in the second octave, marked *f*, with a series of eighth notes. The fifth measure continues the piano part in the second octave, marked *f*, with a series of eighth notes. The sixth measure continues the piano part in the second octave, marked *f*, with a series of eighth notes. The score includes various dynamics and articulations, such as *pp*, *f*, *p*, *sf*, and *sfz*, as well as accents and slurs. The piano part is divided into five octaves, with the first octave being the lowest and the fifth octave being the highest. The voice part is written on a single staff at the top of the score.

25

Score for measures 25-30, featuring Voice, 5th Oct., 4th Oct., 3rd Oct., 2nd Oct., and 1st Oct. staves.

Measure 25: Voice staff has a whole rest. 5th Oct. has a quarter note G4 (mf). 4th Oct. has a quarter note F4 (p). 3rd Oct. has a quarter note E4 (p). 2nd Oct. has a quarter note D4. 1st Oct. has a quarter note C4.

Measure 26: Voice staff has a whole rest. 5th Oct. has a quarter note G4. 4th Oct. has a quarter note F4 (p). 3rd Oct. has a quarter note E4 (p). 2nd Oct. has a quarter note D4. 1st Oct. has a quarter note C4.

Measure 27: Voice staff has a whole rest. 5th Oct. has a quarter note G4. 4th Oct. has a quarter note F4. 3rd Oct. has a quarter note E4 (p). 2nd Oct. has a quarter note D4. 1st Oct. has a quarter note C4.

Measure 28: Voice staff has a whole rest. 5th Oct. has a quarter note G4. 4th Oct. has a quarter note F4. 3rd Oct. has a quarter note E4 (p). 2nd Oct. has a quarter note D4. 1st Oct. has a quarter note C4.

Measure 29: Voice staff has a whole rest. 5th Oct. has a quarter note G4. 4th Oct. has a quarter note F4. 3rd Oct. has a quarter note E4 (p). 2nd Oct. has a quarter note D4. 1st Oct. has a quarter note C4.

Measure 30: Voice staff has a whole rest. 5th Oct. has a quarter note G4. 4th Oct. has a quarter note F4. 3rd Oct. has a quarter note E4 (p). 2nd Oct. has a quarter note D4. 1st Oct. has a quarter note C4 (mf).

31

Score for measures 31-36, featuring Voice, 5th Oct., 4th Oct., 3rd Oct., 2nd Oct., and 1st Oct. staves.

Measure 31: Voice staff has a whole rest. 5th Oct. has a quarter note G4. 4th Oct. has a quarter note F4 (p). 3rd Oct. has a quarter note E4. 2nd Oct. has a quarter note D4. 1st Oct. has a quarter note C4 (pp).

Measure 32: Voice staff has a whole rest. 5th Oct. has a quarter note G4. 4th Oct. has a quarter note F4 (p). 3rd Oct. has a quarter note E4. 2nd Oct. has a quarter note D4. 1st Oct. has a quarter note C4 (mf).

Measure 33: Voice staff has a whole rest. 5th Oct. has a quarter note G4. 4th Oct. has a quarter note F4 (p). 3rd Oct. has a quarter note E4. 2nd Oct. has a quarter note D4. 1st Oct. has a quarter note C4 (p).

Measure 34: Voice staff has a whole rest. 5th Oct. has a quarter note G4. 4th Oct. has a quarter note F4 (p). 3rd Oct. has a quarter note E4. 2nd Oct. has a quarter note D4. 1st Oct. has a quarter note C4 (p).

Measure 35: Voice staff has a whole rest. 5th Oct. has a quarter note G4. 4th Oct. has a quarter note F4 (p). 3rd Oct. has a quarter note E4. 2nd Oct. has a quarter note D4. 1st Oct. has a quarter note C4 (p).

Measure 36: Voice staff has a whole rest. 5th Oct. has a quarter note G4. 4th Oct. has a quarter note F4 (p). 3rd Oct. has a quarter note E4. 2nd Oct. has a quarter note D4. 1st Oct. has a quarter note C4 (p).

The image displays a musical score for the song "The Sound of Silence" by Simon and Garfunkel. The score is written for a voice part and five octaves of piano accompaniment. The time signature is 4/4, and the key signature is C major. The score is divided into six measures, each containing a vocal line and five piano lines. The vocal line is written in a soprano clef, and the piano lines are written in a grand staff (treble and bass clefs). The piano accompaniment features a repeating eighth-note pattern in the right hand and a bass line in the left hand. The vocal line consists of a series of eighth notes, each followed by a quarter rest, with the lyrics "One! Two!" repeated in each measure. The piano accompaniment is characterized by a steady, rhythmic pattern of eighth notes in the right hand and a bass line in the left hand. The score is presented in a clean, black-and-white format, with the vocal line and piano accompaniment clearly distinguished by their respective staves and clefs.